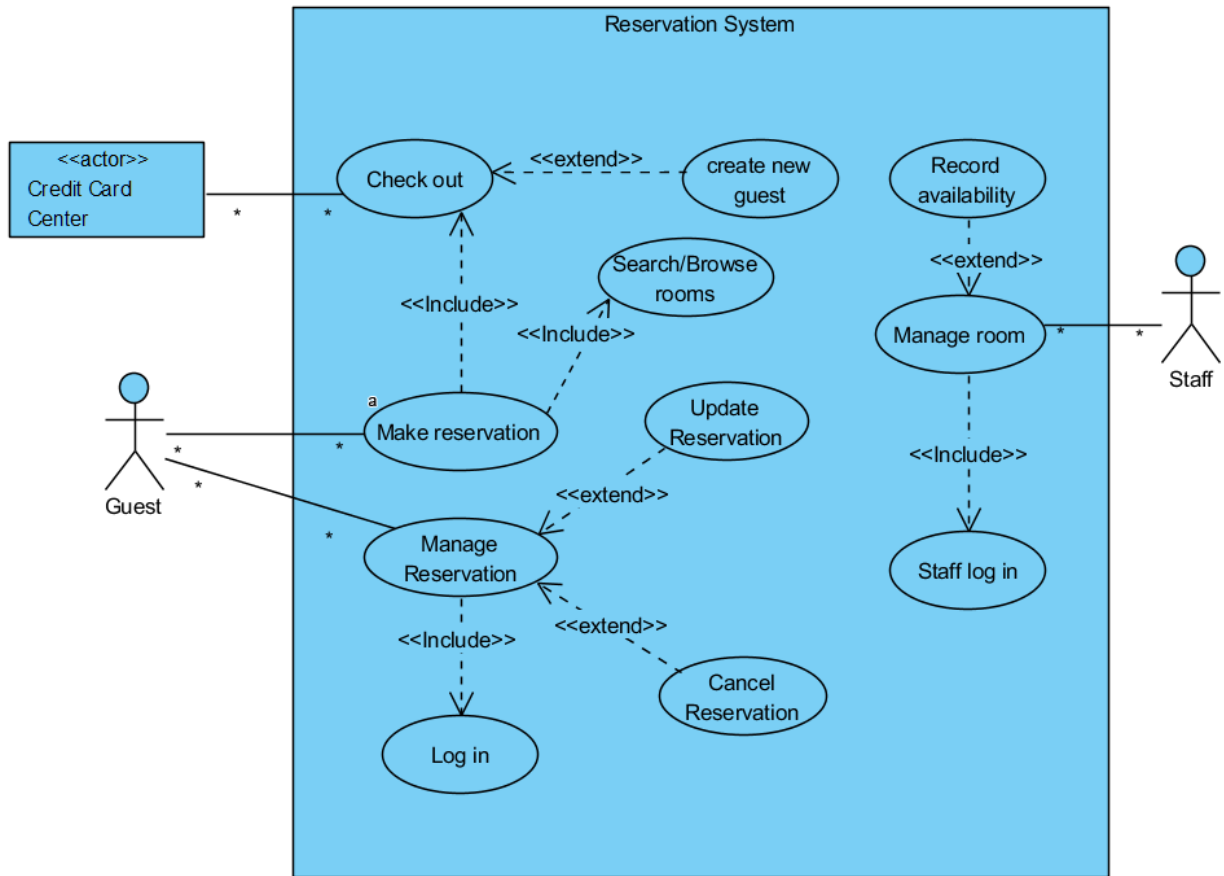
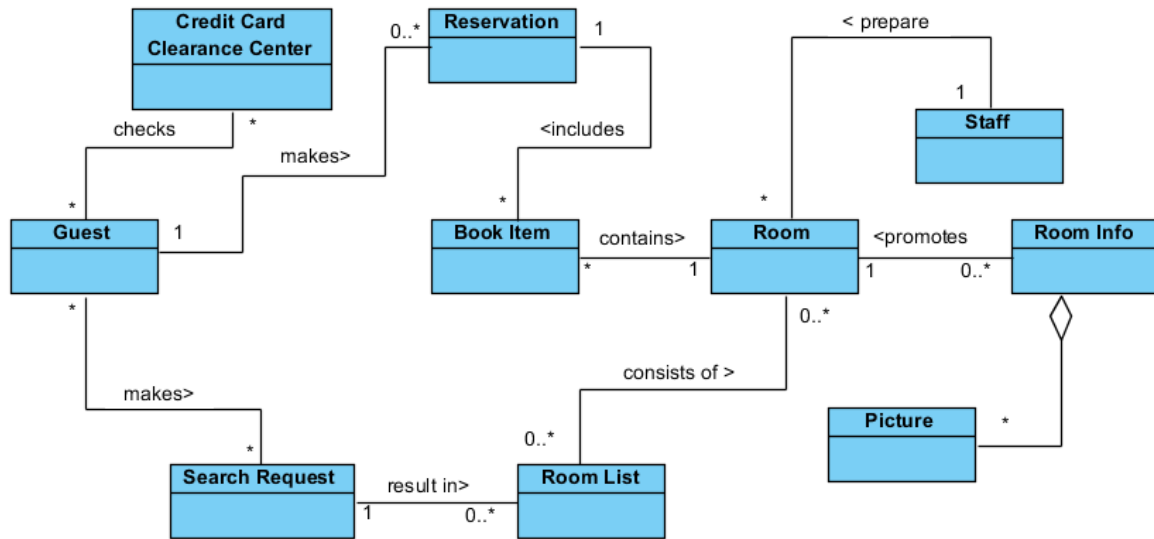

Che' Cobb CEN4021 Assignment 3 Use Case Packet

Use Case Diagram



Class Diagram



Use Case Description

Use-Case Name - Make reservation	ID - 01	Importance Level - High
Primary Actor - Guest	Use-Case Type - Detail, Essential	
Stakeholders and Interest <ul style="list-style-type: none"> • Guest - Wants to search and reserve room • rooms manager- wants to maximize guest's satisfaction 		
Brief Description The use-case describes guest searching rooms and then making a reservation.		
Trigger - Guest comes to the website to reserve a room Type - External		
Relationships <ul style="list-style-type: none"> • Association - Guest • Include - Search/Browse rooms, check out • Extend - create new guest • Generalization 		
Normal Flow of Events <ol style="list-style-type: none"> 1. Guest search website for available rooms 2. System provides guest a list of recommended rooms 3. Guest iterates over 1-2 till he/she likes one room -If guest does not like any room- execute 3a 4. Guest search for marketing information on room 5. System provides room information(images) to guest 6. Guest iterate over 4-5 till he/she decides which room to book -If guest does not like rooms- execute 6a 7. Guest checks out order -If a new guest- execute 7a 8. Guest leaves the website 		
Sub Flows		
Alternate / Exceptional Flows <ol style="list-style-type: none"> 3a. Guest leaves the website 6a. Guest leaves the website 7a. Execute create new guest use case 7b. The guest aborts the order 		

Use-Case Name - Create new guest	ID - 02	Importance Level - High
Primary Actor - Guest	Use-Case Type - Detail, Essential	
Stakeholders and Interest <ul style="list-style-type: none"> • Guest - Wants to be able to reserve the room • room manager- wants to increase the guest database 		
Brief Description The use-case describes how guest is added to a database		
Trigger - A new guest attempt to check out Type - External		
Relationships <ul style="list-style-type: none"> • Association • Include • Extend • Generalization 		
Normal Flow of Events <ol style="list-style-type: none"> 1. System prompt user to register a new account 2. User type into his/her information 3. System validate user input data 4. Iterate 2-3 till data is valid 5. A new guest record has been created 6. Guest leaves the website 		
Sub Flows		
Alternate / Exceptional Flows 2a. User aborts creating new account		

Use-Case Name - Check out	ID - 03	Importance Level - High
Primary Actor - Guest	Use-Case Type - Detail, Essential	
Stakeholders and Interest <ul style="list-style-type: none"> • Guest - Wants to be able to reserve the room • sale manager- wants to increase the booking 		
Brief Description The use-case describes how guest check out		

<p>Trigger - A new guest attempt to check out Type - External</p>
<p>Relationships</p> <ul style="list-style-type: none"> • Association - credit card center • Include • Extend • Generalization
<p>Normal Flow of Events</p> <ol style="list-style-type: none"> 1. System prompt user to enter a credit card information 2. User type into his/her information 3. System send the information to credit card center for authorization -If credit card center does not authorize the card, execute 3a 4. System send confirmation email to user
<p>Sub Flows</p>
<p>Alternate / Exceptional Flows</p> <p>3a. User changes his/her card and execute 2</p> <p>3b. User aborts order</p>

Use-Case Name - Search / Browse rooms	ID - 04	Importance Level - High
Primary Actor - Guest	Use-Case Type - Detail, Essential	
<p>Stakeholders and Interest</p> <ul style="list-style-type: none"> • Guest - Wants to be able to reserve the room • sale manager- Wants to satisfy the guest 		
<p>Brief Description</p> <p>The use-case describes how guest search and browse rooms</p>		
<p>Trigger - A new guest opens the website to book rooms Type - External</p>		
<p>Relationships</p> <ul style="list-style-type: none"> • Association - Guest • Include • Extend • Generalization 		

<p>Normal Flow of Events</p> <ol style="list-style-type: none"> 1. Guest search website for available rooms 2. System provides guest a list of recommended rooms 3. Execute Make reservation use case
<p>Sub Flows</p>
<p>Alternate / Exceptional Flows</p> <ol style="list-style-type: none"> 2a. Guest leaves the website

<p>Use-Case Name - Manage reservation</p>	<p>ID - 05</p>	<p>Importance Level - High</p>
<p>Primary Actor - Guest</p>	<p>Use-Case Type - Detail, Essential</p>	
<p>Stakeholders and Interest</p> <ul style="list-style-type: none"> • Guest - Wants to be able to manage the reservation 		
<p>Brief Description</p> <p>The use-case describes guest manage the reservation</p>		
<p>Trigger - A new guest opens the website to find his/her reservation</p> <p>Type - External</p>		
<p>Relationships</p> <ul style="list-style-type: none"> • Association - Guest • Include - Log in • Extend - Update reservation, Cancel reservation • Generalization 		
<p>Normal Flow of Events</p> <ol style="list-style-type: none"> 1. Execute the log in use case 2. System provides guest reservation information 3. Guest chooses on of the management options <ul style="list-style-type: none"> -If guest wants to change the reservation - guest executes subflow 3a -If guest wants to cancel the reservation - guest executes subflow 3b 4. Guest leaves the website 		
<p>Sub Flows</p> <ol style="list-style-type: none"> 3a. Execute change reservation use case 3b. Execute cancel reservation use case 		

Alternate / Exceptional Flows 3c. Guest view the reservation details
--

Use-Case Name - Log in	ID - 06	Importance Level - High
Primary Actor - Guest	Use-Case Type - Detail, Essential	
Stakeholders and Interest <ul style="list-style-type: none"> • Guest - Wants to log in 		
Brief Description The use-case describes guest log in		
Trigger - A new guest opens the website to log in Type - External		
Relationships <ul style="list-style-type: none"> • Association - Guest • Include - Log in • Extend • Generalization 		
Normal Flow of Events <ol style="list-style-type: none"> 1. Guest types in user name and password 2. System validates the form <ul style="list-style-type: none"> -If form data does not match record in the database, executes flow 1 3. Guest choose chose one of the following options <ul style="list-style-type: none"> -If guest wants to make a new reservation, guest executes subflow 3a -If guest wants to manage current reservation, guest executes subflow 3b 		
Sub Flows <ol style="list-style-type: none"> 3a. Execute search/browse rooms use case 3b. Execute manage reservation use case 		
Alternate / Exceptional Flows 3c. Guest leaves the website		

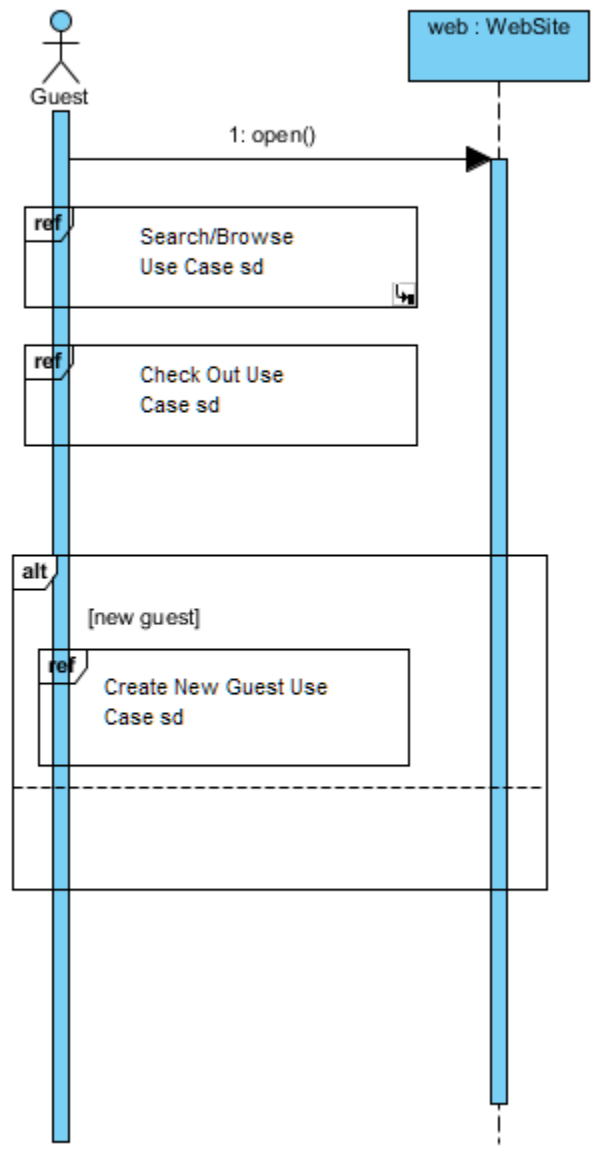
Use-Case Name - Manage room	ID - 07	Importance Level - High
Primary Actor - Staff	Use-Case Type - Detail, Essential	

Stakeholders and Interest <ul style="list-style-type: none">• Staff- wants to manage the rooms to keep room information up to date
Brief Description <p>The use-case describes staff manages the room information</p>
Trigger - A staff goes to the system to update room information Type - External
Relationships <ul style="list-style-type: none">• Association - Staff• Include• Extend - Record availability• Generalization
Normal Flow of Events <ol style="list-style-type: none">1. If staff does not log in, executes use case Staff log in2. Staff choses one of the following options<ul style="list-style-type: none">-If staff wants to add a room, executes subflow 2a-If staff wants to update room, executes subflow 2b-If staff wants to delete room, executes subflow 2c3. Staff leaves the system
Sub Flows <ol style="list-style-type: none">2a. Staff adds a new room2b. Staff executes Record availability use case2c. Staff deletes a room
Alternate / Exceptional Flows

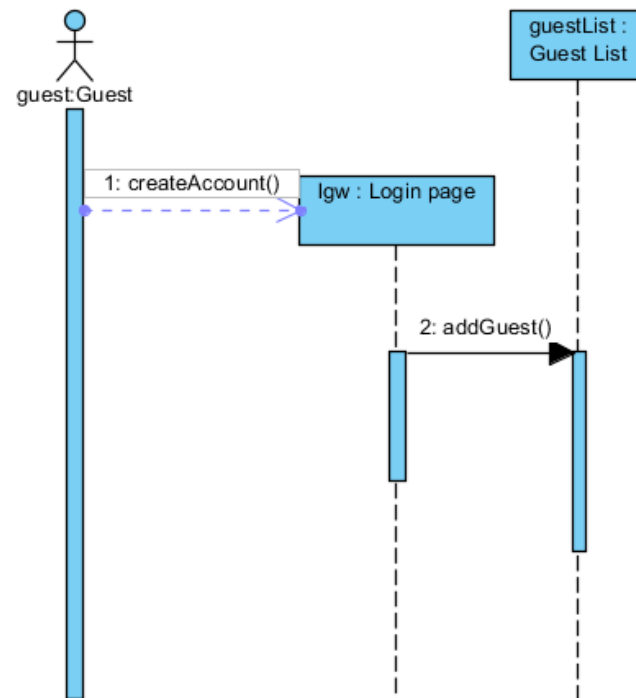
Use Case Sequence Diagram

01: Make Reservation Use Case Sequence Diagram

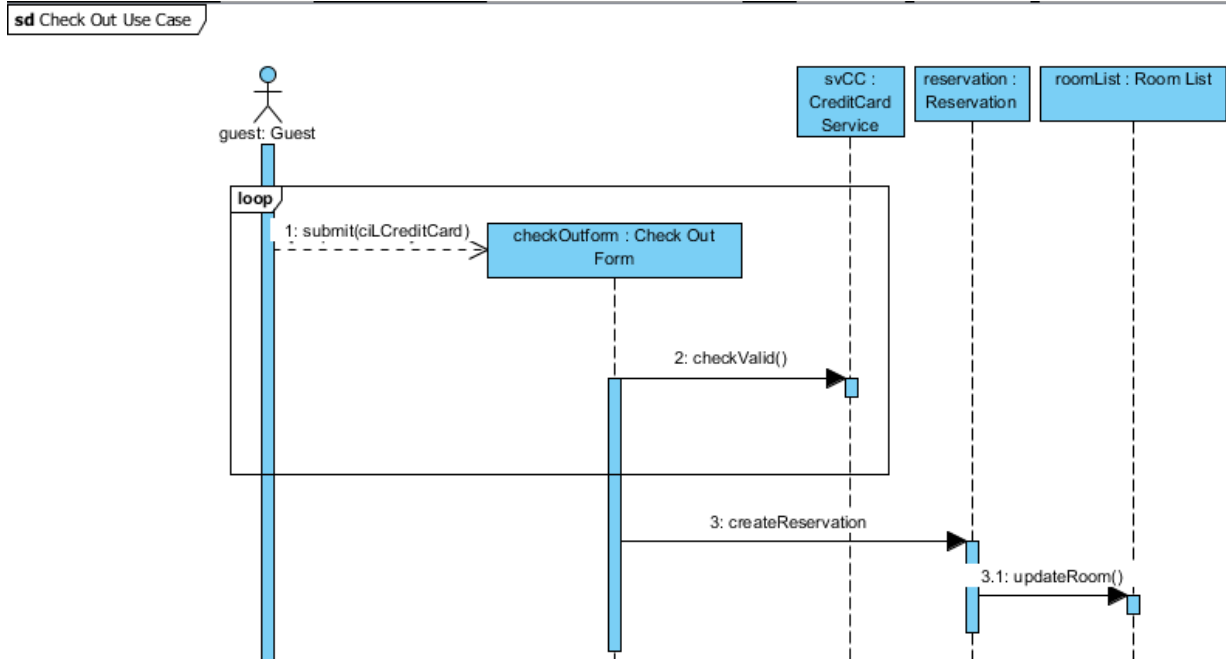
sd Make reservation



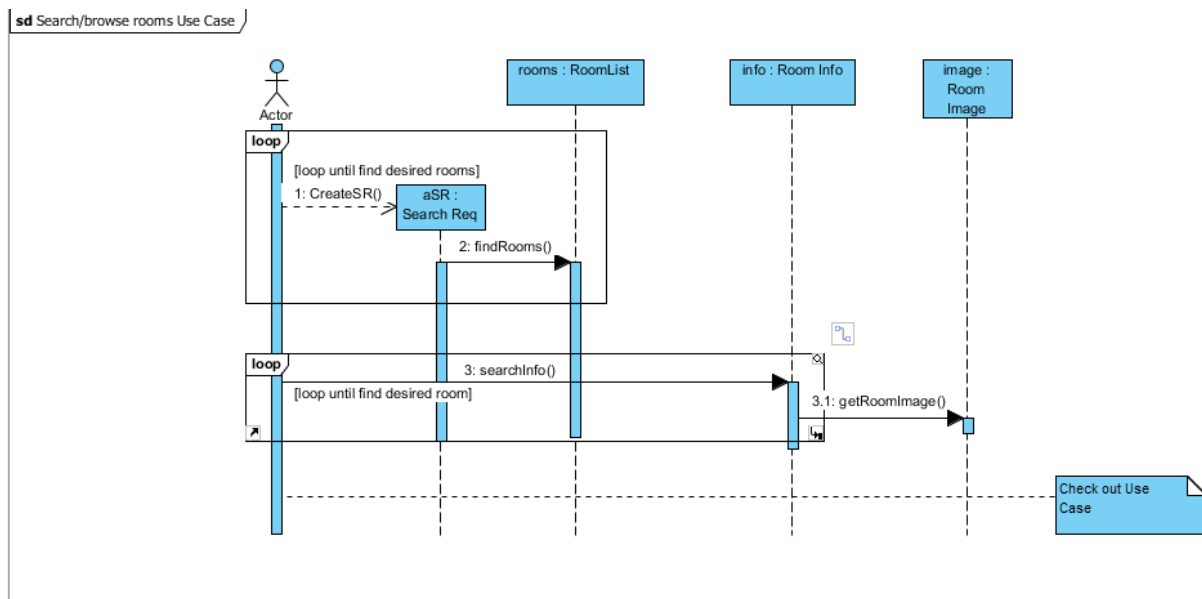
02: Create new guest Use Case Sequence Diagram

sd Create New Guest

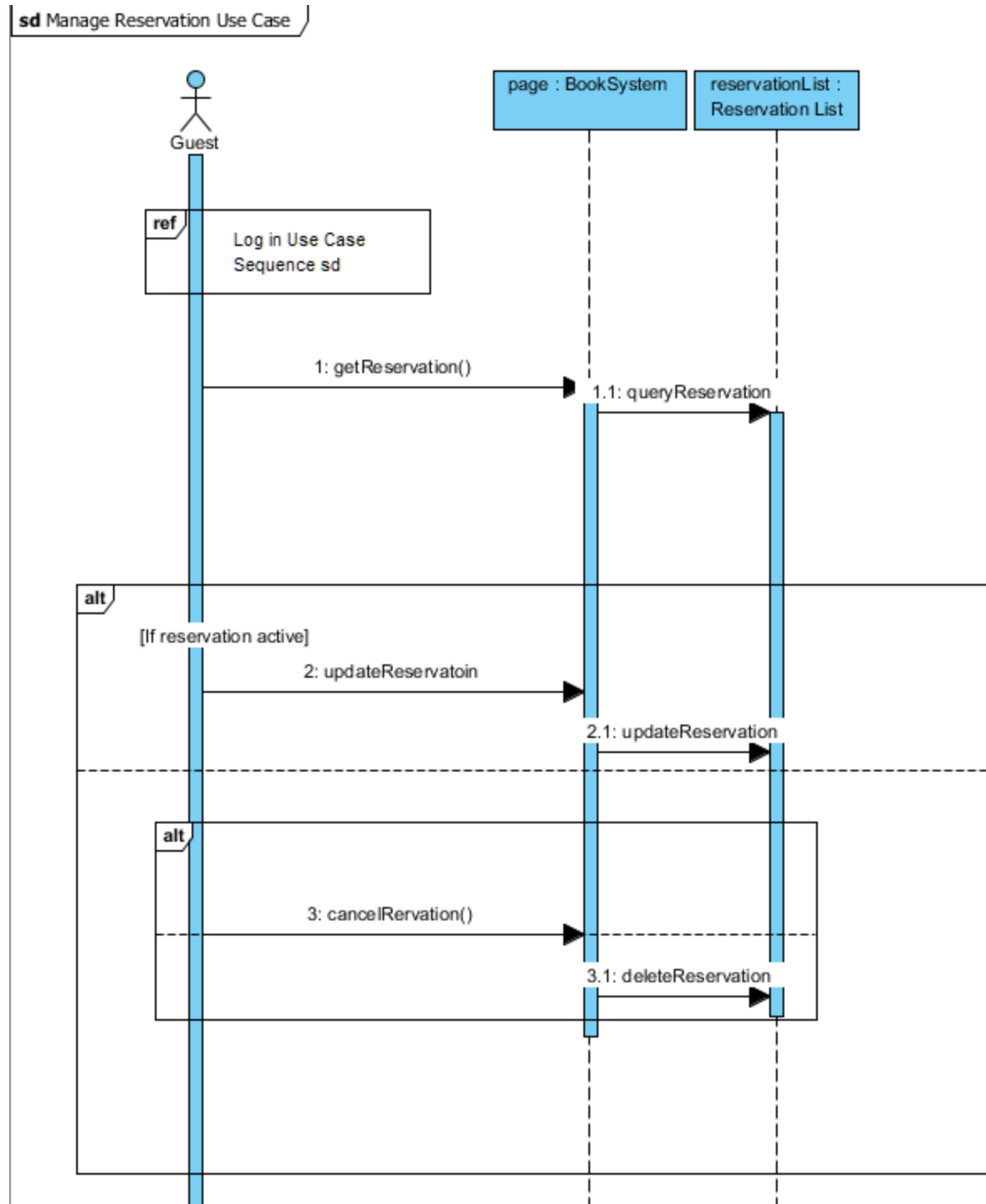
03: Check Out Use Case Sequence Diagram



04: Borrow Rooms Use Case Sequence Diagram

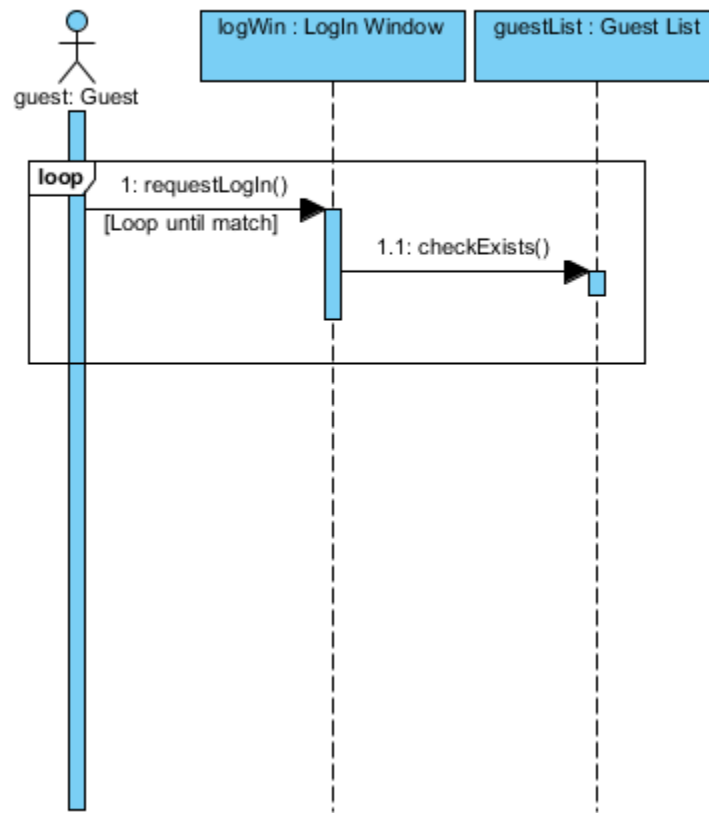


05: Manage Reservation Use Case Sequence Diagram

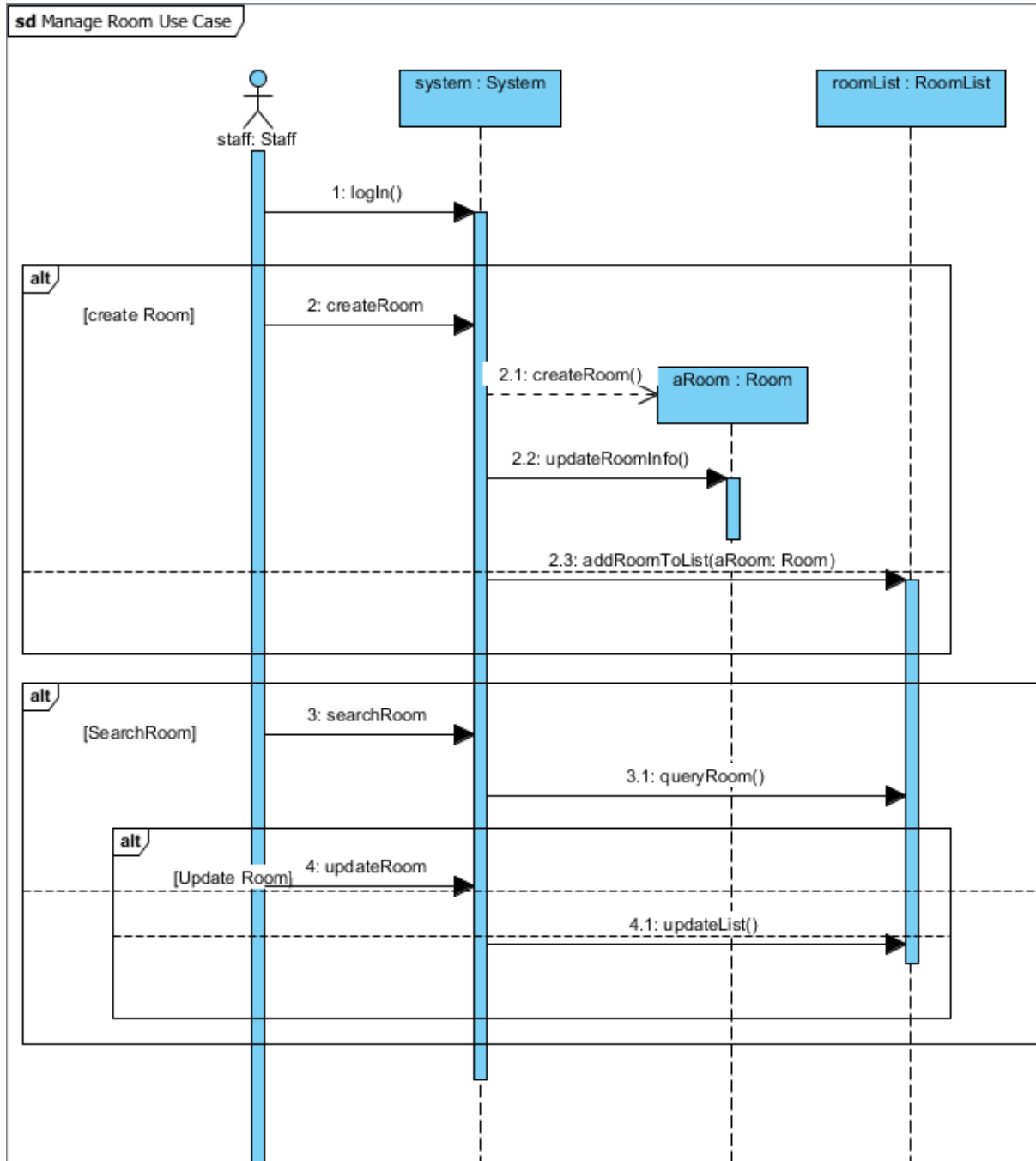


06: Log in Use Case Sequence Diagram

sd Log in Use Case

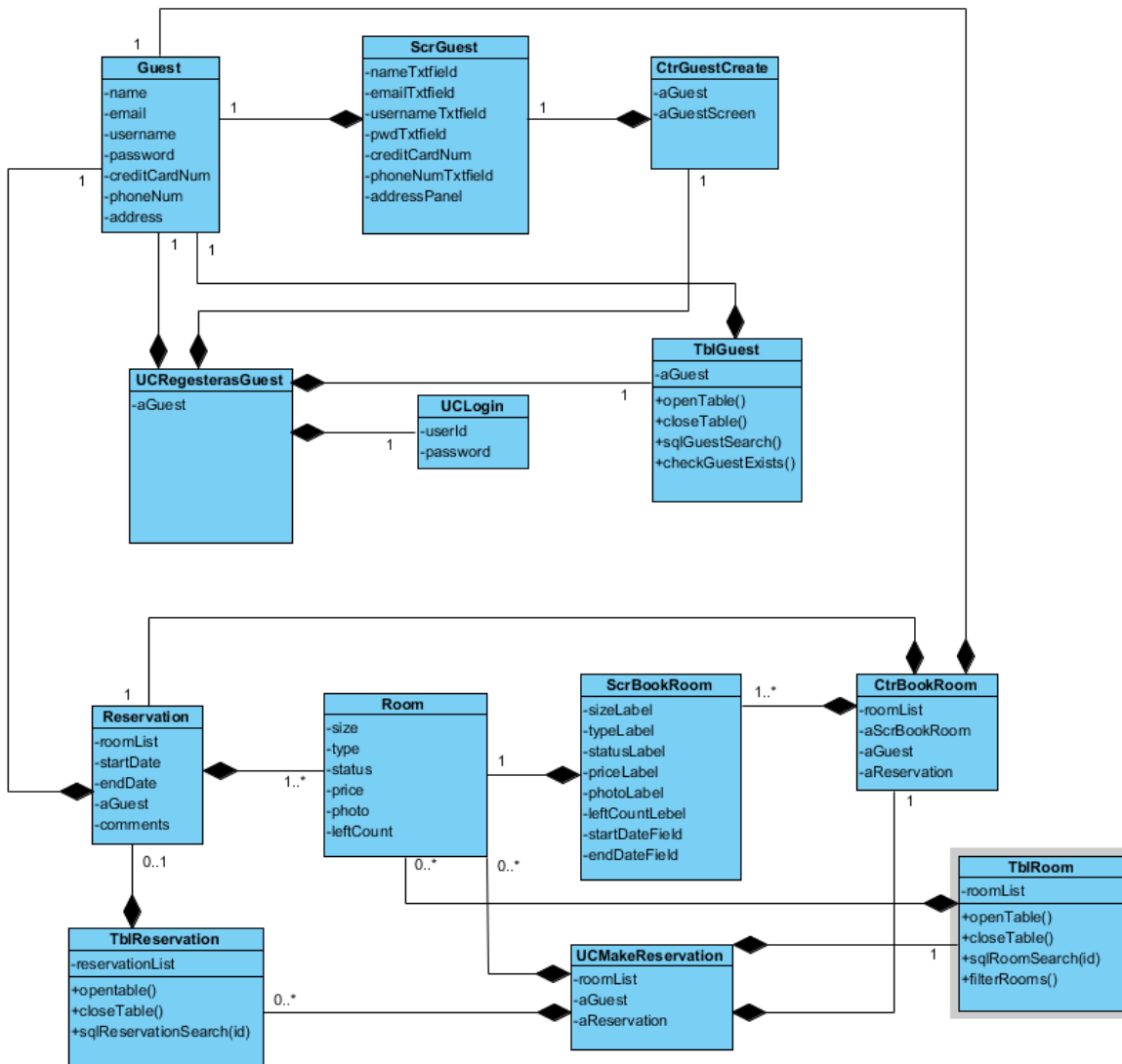


07: Manage Room Use Case Sequence Diagram

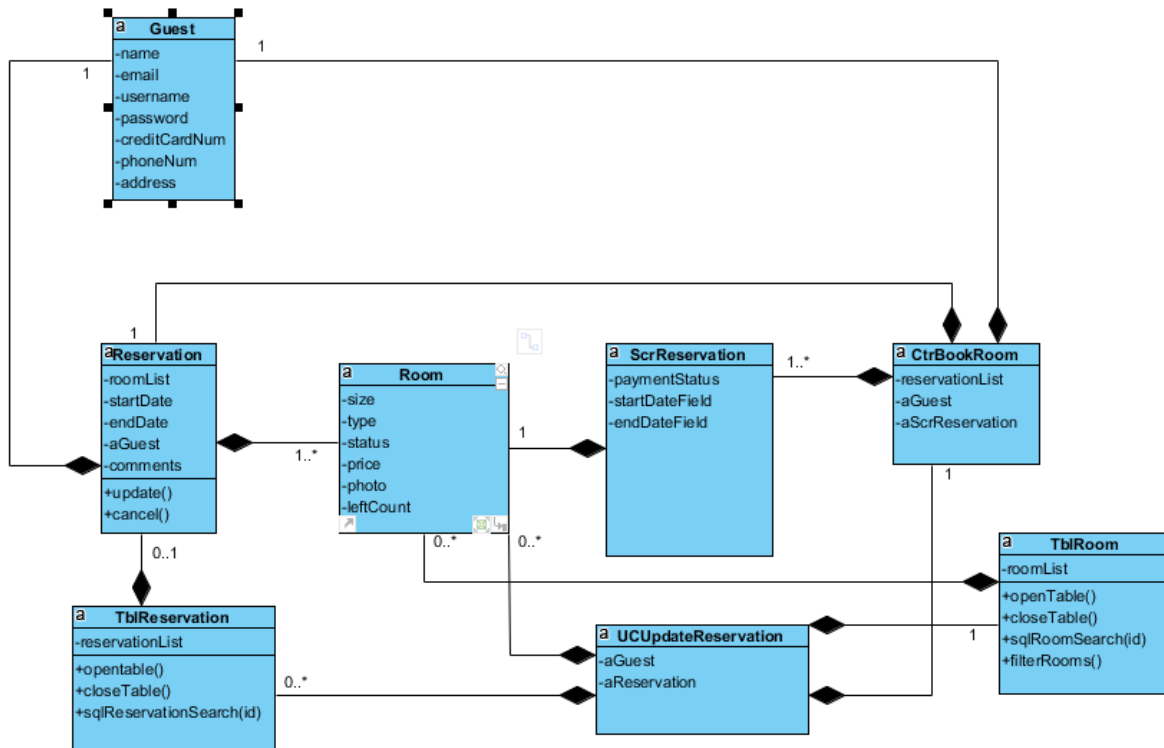


Use Case Extended Class Diagram

Use Case Register Guests and Make Reservation



Use Case Manage Reservation Extended Class Diagram



Use Case Staff Manage Room Extended Class Diagram

